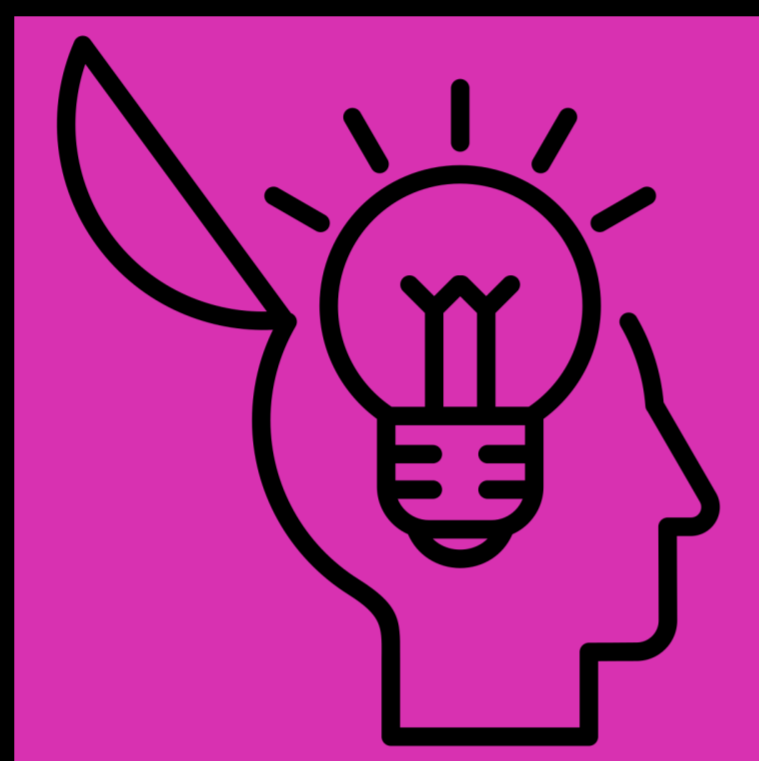




Citational practices in sign language interpreting research: Citational politics or policing citations?

Karolien Gebruers



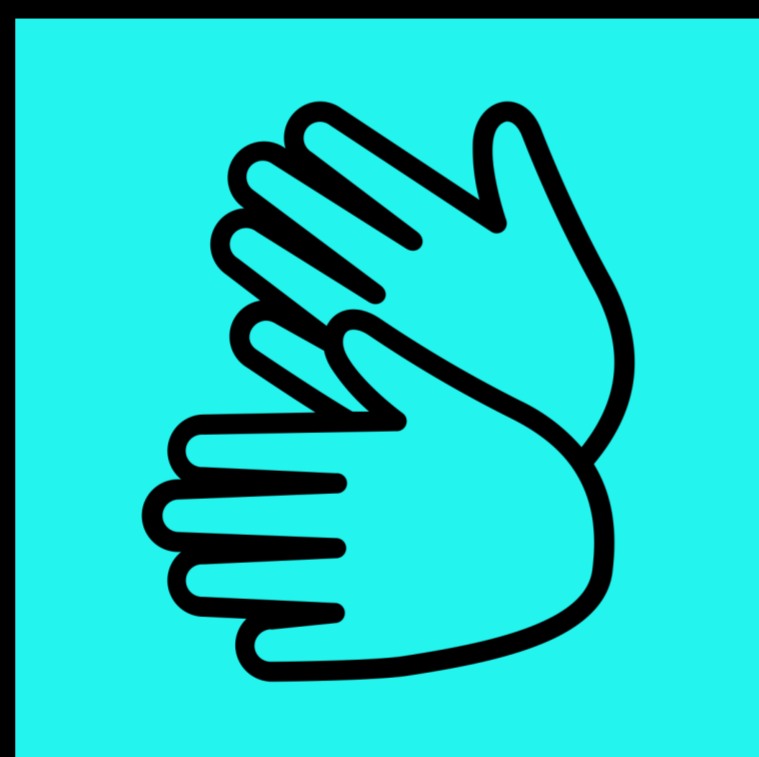
Topic

Critically looking at the citational practices in sign language interpreting research and considering their application by early career researchers (ECCs).

What are the current practices in the field and (how) can we, as ECCs, challenge them?

- Part of 'disciplinary reflexivity' (Wilkinson, 1988)
- Citation is a "reproductive technology" (Ahmed, 2013)
- Citational practices are "never neutral" (Craven, 2021)
- Academic guidance: focus on the 'how' of citing (Kim, 2020)
 - 'Cite Black Women' movement (Smith et al., 2021)
- Gender citation gap (Yan, Muenks & Henderson, 2024)

Literature



SLI studies

- Western discipline; focus on global North
- Interpreting Studies: "testosterone-washing" (Roy, Brunson & Stone, 2018)
- Translation & Interpreting Studies: name/pronoun index list (Strowe, 2024)
- Citing Deaf Studies: cherry-picking?
- Contributions from minority scholars?

- What are best practices?
- What is expected from PhD students/early career researchers?
 - How can we critically engage with our citation practices?
 - What are *your* practices?

Questions



"Citational praxis needs to be about the long game" (Craven, 2021, p. 127)

References



SCAN ME

Questions, comments, suggestions?



SCAN ME



© Gebruers, Summer School Brussels, June 2024

Karolien Gebruers (she/her) is a white female hearing feminist from Belgium. She has been working as a Dutch/ Flemish Sign Language interpreter since 2012 and occasionally carries out IS conference interpreting work. Karolien has a background in Speech, Language and Hearing Sciences, and Interpreting. She is a fourth-year PhD candidate at Heriot-Watt University in Scotland, supervised by Professor Kate Sang and Professor Jemina Napier. Her research focuses on gender in the IS conference interpreting context through an intersectional lens.

@KaroGebruers
kg43@hw.ac.uk

<https://signs.hw.ac.uk/people/gebruers/>